

Synetik  
ErgoCare

# CATALOG

*Parts and Products*





# Welcome to our Synetik catalog

## Synetik Ergocare

designs, manufactures, and distributes innovative assistive devices for children with special needs.

We partner with families, professionals, and distributors to create mobility solutions that enhance daily life and support each child's growth and potential.

With over 20 years of expertise in ergonomic innovation, Synetik remains dedicated to improving well-being through safe, effective, and thoughtfully designed solutions.

**Empowering children to thrive isn't just our mission,  
it's our passion.**



# Table of contents

## Parts

## Parts

<b>6</b>	Headrest
<b>8</b>	Headrest support
<b>9</b>	Headrest anchoring mechanism
<b>10</b>	Headrest accessory
<b>12</b>	Abduction support Thoracic support Plastron
<b>13</b>	Anchor clamp
<b>15</b>	Belt accessory
<b>18</b>	Gel pad
<b>19</b>	Slide for tray
<b>20</b>	Slide for half tray
<b>21</b>	Anchor plate
<b>22</b>	L-Shape bracket
<b>23</b>	Tightening knob
<b>24</b>	Tightening knob & wrench



Standing Frame

# VERTIFLEX

<b>25</b>	VERTIFLEX - Sizes Component identification
<b>26</b>	Push handle Padded chinrest Prone headrest Shoulder support Axilla anchor block Hybrid headrest anchor block Shoulder anchor block
<b>27</b>	Standard thoracic support Swing away thoracic support Thoracic support with elbow stop Independent thoracic support receiver Standard thoracic support receiver
<b>28</b>	Padded strap Chest harness Planar pad Half tray padding
<b>29</b>	Standard tray Tray with activity bowl Elbow stop for tray Universal tray support
<b>30</b>	Standard hip support Swing away hip support Hip support receiver Abduction pommel
<b>31</b>	Simple lateral knee support Double lateral knee support
<b>32</b>	Multi-axis footrests (abduction Vertiflex) Multi-axis footrests (standard Vertiflex) Plate type footrest (standard Vertiflex) Abduction system conversion kit Foot holder Toe strap
<b>33</b>	Universal base on wheels Set of (4) swivel wheels with brake Gas cylinder Cylinder hand-lever lock Cylinder activation strap Accessory tray for universal base
<b>34</b>	Vertiflex frame kit Vertiflex central mast kit Growing kit

# Table of contents

## Standing Frames

## Professional seating

Standing Frame

# SKY

-Synetik

<b>35</b>	SKY - Sizes Component identification
<b>36</b>	Tray with half padding Thoracic support Hip support Knee support Footplate Thoracic anchor block Hip anchor block
<b>37</b>	Stabilizer Stabilizer extension Central frame Assembled hinge support Gas cylinder Cylinder fixing pin Assembled base on wheels
<b>38</b>	Omnistool Omnistool+
<b>39</b>	TA200 STAG4

## Professional seating

# HEADREST

All headrests are covered in black neoprene and equipped with a 1" diameter pivot lock washer at the rear, and (3) fixing screws.


**SOFT**


<b>022-00001-4</b>	4"H x 9-1/2" Soft headrest
<b>022-00001-5</b>	5"H x 10" Soft headrest
<b>022-00001-6</b>	6"H x 11" Soft headrest

**RIGID**


<b>022-00002-4</b>	3"H x 9-1/2" Rigid headrest
<b>022-00002-5</b>	4"H x 10" Rigid headrest
<b>022-00002-6</b>	5-1/2"H x 11" Rigid headrest

**SHAPEABLE**


<b>022-00004-4</b>	4"H x 9-1/2" Soft shapeable headrest
<b>022-00004-5</b>	5"H x 10" Soft shapeable headrest
<b>022-00004-6</b>	6"H x 11" Soft shapeable headrest

# HEADREST

All headrests are covered in black neoprene and equipped with a 1" diameter pivot lock washer at the rear, and (3) fixing screws.



SHAPEABLE LATERALS



**022-00003**

3"H X 12"

Soft shapeable laterals headrest



**022-00007**

6"H x 16"

Large soft headrest

LARGE FORMAT

MULTI-ANGLE ADJUSTABLE



**022-00005-14**

4-1/2"H Multi-angle adjustable headrest

**022-00005-16**

5"H Multi-angle adjustable headrest

**022-00005-17**

5-1/2"H Multi-angle adjustable headrest

REPLACEMENT COVER



**038-00002-4**

Replacement cover for headrest  
3-1/2"H x 6"

**038-00002-5**

Replacement cover for headrest  
4-1/2"H x 7"

**038-00002-6**

Replacement cover for headrest  
5-1/2"H x 8"

# HEADREST SUPPORT

All headrest supports are made of aluminum and equipped with a 1" diameter pivot lock washer. The anchor plate has mounting holes designed for 1/4" bolts.

MULTIDIRECTIONAL



**020-00001-A**  
Straight multidirectional  
headrest support  
Gray



**020-00004-A**  
45° multidirectional  
headrest support  
Gray



**020-00004-N**  
45° multidirectional  
headrest support  
Black



**020-00006**  
Multidirectional headrest  
support with pivot  
Gray



**020-00008**  
Multidirectional headrest  
support  
Gray



**020-00010**  
45° multidirectional headrest  
support without anchorage  
Gray

90°



**020-00007**  
90° headrest support  
Gray



**020-00014**  
90° headrest support  
without anchorage  
Gray



**020-00009**  
90° Offset headrest support  
Gray

OFFSET

# HEADREST ANCHORING MECHANISM

All headrest anchoring mechanisms are made of aluminum and finished in black.

FIXED



**021-00005-1**  
7/8" fixed anchoring mechanism extendable from 12" to 15"



**021-00005-2**  
1" fixed anchoring mechanism extendable from 12" to 15"



**021-00005-3**  
7/8" fixed anchoring mechanism extendable from 15" to 20"



**021-00005-4**  
1" fixed anchoring mechanism extendable from 15" to 20"

REMOVABLE



**021-00003-1**  
Removable anchoring mechanism extendable from 15" to 20"



**021-00003-2**  
Removable anchoring mechanism extendable from 12" to 15"



**021-00006**  
U-shaped tension bar

TENSION BAR

# HEADREST ACCESSORY

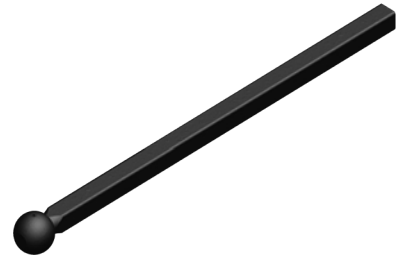
All headrest extensions are made of aluminum and fitted with a 1" diameter anchor ball joint, where applicable.



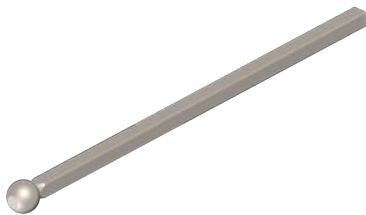
**039-00001-A**  
8" headrest extension  
Gray



**039-00001-N**  
8" headrest extension  
Black



**039-00009**  
12" headrest extension  
Black



**039-00003-A**  
15" headrest extension  
Gray



**039-00003-N**  
15" headrest rod  
Black



**039-00010**  
12" curved headrest extension  
Black



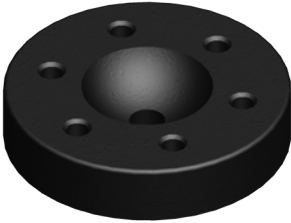
**039-00011-PNO**  
Headrest extension with  
5"Ø round fixation plate  
Black

HEADREST EXTENSION

# HEADREST ACCESSORY

All pivot clamp rings are made of aluminum and suitable for a 1" diameter anchor ball joint.

## PIVOT CLAMP RING



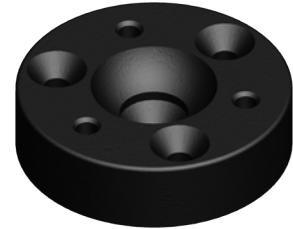
**039-00013-ANO**

1" Pivot clamp ring  
6 threaded holes  
(2"Ø x 7/16") Black



**039-00014**

1" Pivot clamp ring  
Gray



**039-00015-ANO**

1" Pivot clamp ring  
3 threaded holes  
(2"Ø x 1/2") Black

## STOP COLLAR



**039-00002**

Stop collar  
for 1/2" square  
Black



# ABDUCTION SUPPORT THORACIC SUPPORT PLASTRON

The abduction and thoracic supports are made of aluminum and coated with a black finish.

## ABDUCTION SUPPORT



**080-00002**  
Heavy Duty rocker  
abduction stop support



**080-00003**  
Rocker abduction stop  
support

## SWIVEL THORACIC SUPPORT



**060-00001-L**  
Left swivel thoracic support



**060-00001-R**  
Right swivel thoracic support

## PLASTRON



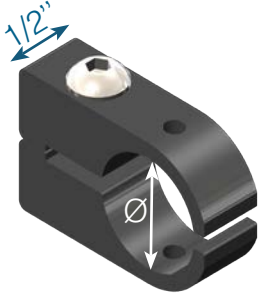
All plastrons are covered with black neoprene.

<b>084-00001</b>	Plastron 4”H x 6”
<b>084-00002</b>	Plastron 5”H x 7”
<b>084-00003</b>	Plastron 6”H x 8”
<b>084-00004</b>	Plastron 7”H x 9”

# ANCHOR CLAMP

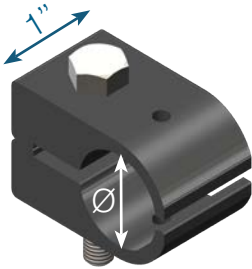
All anchor clamps are made of aluminum and coated in a black finish.

## 1/2" ANCHOR CLAMP



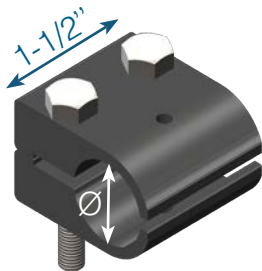
<b>160-00020</b>	1/2" Anchor clamp for 3/4"Ø tube
<b>160-00021</b>	1/2" Anchor clamp for 7/8"Ø tube
<b>160-00022</b>	1/2" Anchor clamp for 1"Ø tube

## 1" ANCHOR CLAMP



<b>160-00007</b>	1" Anchor clamp for 3/4"Ø tube
<b>160-00008</b>	1" Anchor clamp for 7/8"Ø tube
<b>160-00009</b>	1" Anchor clamp for 1"Ø tube

## 1-1/2" ANCHOR CLAMP



<b>160-00025</b>	1-1/2" Anchor clamp for 3/4"Ø tube
<b>160-00015</b>	1-1/2" Anchor clamp for 7/8"Ø tube
<b>160-00016</b>	1-1/2" Anchor clamp for 1"Ø tube

# ANCHOR CLAMP

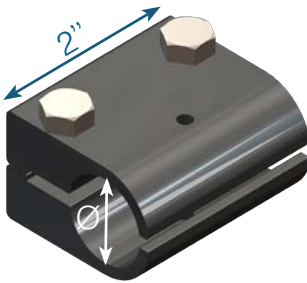
All anchor clamps are made of aluminum and coated in a black finish.

## 1-1/2" ANCHOR CLAMP (3 bolts)



<b>160-00004</b>	1-1/2" Anchor clamp for 3/4"Ø tube
<b>160-00005</b>	1-1/2" Anchor clamp for 7/8"Ø tube
<b>160-00006</b>	1-1/2" Anchor clamp for 1"Ø tube

## 2" ANCHOR CLAMP



<b>160-00013</b>	2" Anchor clamp for 3/4"Ø tube
<b>160-00024</b>	2" Anchor clamp for 7/8"Ø tube
<b>160-00014</b>	2" Anchor clamp for 1"Ø

## STRAP ANCHOR



<b>085-00001-1-PNO</b>	1" Strap anchor
<b>085-00001-1.5-PNO</b>	1-1/2" Strap anchor
<b>085-00001-2-PNO</b>	2" Strap anchor

# BELT ACCESSORY

STRAP LOOP



**085-00002**  
1" Strap loop  
zinc



**085-00003**  
1-1/2" Strap loop  
zinc



**085-00004**  
2" Strap loop  
zinc



**085-00005**  
1" Strap loop  
plastic



**085-00006**  
1-1/2" Strap loop  
plastic



**085-00007**  
2" Strap loop  
plastic

STRAP PAD



The strap pads are maded with black neoprene.

<b>085-C251P</b>	Pad for 1" strap
<b>085-C251M</b>	Pad for 1-1/2" strap
<b>085-C251L</b>	Pad for 2" strap

# BELT ACCESSORY

ANCHOR STOP



**099-00002**  
#10-32 x 7/8"  
Anchor stop



**099-00034**  
3/8"Ø x 15/16" (1/4-20UNC)  
Anchor stop

PLASTIC BUCKLE



**099-00032**  
1-1/2"  
Side push button  
plastic buckle



**099-00033**  
2"  
Side push button  
plastic buckle



**099-00010**  
1"  
Side push button  
plastic buckle



**099-00011**  
1-1/2"  
Front push button  
plastic buckle



**099-00031-S**  
1"  
Single side push button  
plastic buckle



**099-00031-D**  
1"  
Double side push button  
plastic buckle

# BELT ACCESSORY

METAL BUCKLE



**099-00019**  
1-1/2" Car type  
metal buckle



**099-00021**  
1-1/2" Car type metal buckle  
with protection button  
(Release key excluded)



**099-00035**  
1" Magnetic buckle  
with "D" ring



**099-00018**  
2" Car type  
metal buckle



**099-00020**  
2" Car type metal buckle  
with protection button  
(Release key excluded)



**099-00036**  
1-1/2" Magnetic buckle  
with "D" ring



**099-00037**  
1" Magnetic buckle



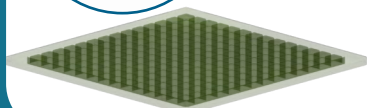
**099-00038**  
1-1/2" Magnetic buckle



**099-00001**  
Release key  
(for buckle #099-00021)

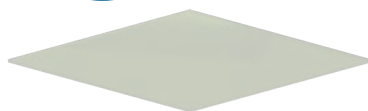
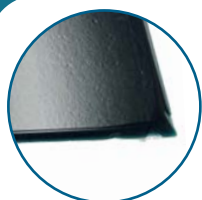
# GEL PAD

CUBIC TYPE



Part number	Size	
<b>090-00001</b>	9/16"	16" x 16"
<b>090-00002</b>		16" x 18"
<b>090-00003</b>		18" x 18"

FLAT TYPE



Part number	Size		Part number	Size	
<b>091-00001</b>	1/4"	16" x 16"	<b>091-00016</b>	5/8"	16" x 16"
<b>091-00002</b>		16" x 18"	<b>091-00017</b>		16" x 18"
<b>091-00003</b>		18" x 18"	<b>091-00018</b>		18" x 18"
<b>091-00004</b>		18" x 20"	<b>091-00019</b>		18" x 20"
<b>091-00005</b>		20" x 20"	<b>091-00020</b>		20" x 20"
<b>091-00006</b>	3/8"	16" x 16"	<b>091-00021</b>	3/4"	16" x 16"
<b>091-00007</b>		16" x 18"	<b>091-00022</b>		16" x 18"
<b>091-00008</b>		18" x 18"	<b>091-00023</b>		18" x 18"
<b>091-00009</b>		18" x 20"	<b>091-00024</b>		18" x 20"
<b>091-00010</b>		20" x 20"	<b>091-00025</b>		20" x 20"
<b>091-00011</b>	1/2"	16" x 16"	<b>091-00026</b>	1"	16" x 16"
<b>091-00012</b>		16" x 18"	<b>091-00027</b>		16" x 18"
<b>091-00013</b>		18" x 18"	<b>091-00028</b>		18" x 18"
<b>091-00014</b>		18" x 20"	<b>091-00029</b>		18" x 20"
<b>091-00015</b>		20" x 20"	<b>091-00030</b>		20" x 20"

# SLIDE FOR TRAY

All slides for tray are made of aluminum and coated in a black finish.



**101-00010**  
1"Ø x 1"  
Spacer for adjustable tray



**101-00009**  
Set of (2)  
adjustable tray slides



**101-00012**  
13" Standard adjustable  
tray slide  
(Hardware included)



**101-00013**  
Set of (2)  
12" adjustable tray slides

TRAY SLIDE



# SLIDE FOR HALF TRAY

All slides for half tray are made of aluminum and coated in a black finish.

SLIDE FOR HALF TRAY



**101-00007**  
Half tray support  
with double pivot and  
side adjustment



**101-00011**  
Half tray support  
with double pivot

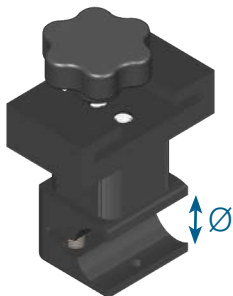


**101-00014-LH**  
Left half tray support  
with pivot



**101-00014-RH**  
Right half tray support  
with pivot

LATERAL ANCHOR CLAMP



**160-00023**

Lateral anchor clamp for 7/8"Ø tube

# ANCHOR PLATE

All anchor plates are made of aluminum with a black finish and feature mounting holes suitable for 1/4" bolts.

## SIMPLE ANCHOR



**160-00019**

Simple anchor plate for 1/2" square

## DOUBLE ANCHOR



**160-00003**

ACTABACK BT38744 backrest  
Double anchor plate for 1/2" square



**160-00001**

Double anchor plate for 1/2" square

## DOUBLE ANCHOR WITH CLAMP



**160-00012**

Double anchor plate with 3/4"Ø tube clamp for 1/2" square

**160-00010**

Double anchor plate with 7/8"Ø tube clamp for 1/2" square

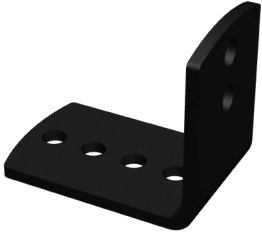
**160-00011**

Double anchor plate with 1"Ø tube clamp for 1/2" square

# L-SHAPE BRACKET

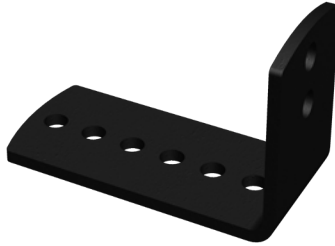
All L-shape brackets have a black finish. Plate type brackets have mounting holes for 1/4" bolts.

## PLATE TYPE



### 163-00001

Short L-shape bracket  
2" x 2-1/4" x 1/8" thick  
Steel/Black



### 163-00002

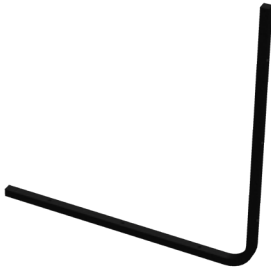
Long L-shape bracket  
2" x 3-3/8" x 1/8" thick  
Steel/Black



### 163-00003

L-shape bracket  
1" x 3-1/2" x 1/8" thick  
Steel/Black

## SQUARE TYPE



### 163-00004

1/2" Square L-shape  
bracket 16-1/2" x 16-1/2"  
Aluminum/Black



# TIGHTENING KNOB

All tightening knobs have a nylon button and a steel screwable part.

(2) POINTS



**170-00008**

(2) points tightening knob  
M6 x 15 mm  
(flat washer included)



**170-00005**

(2) points tightening knob  
M8 x 10 mm



**170-00007**

(2) points tightening knob  
1/4"-20 x 1/2"

(4) POINTS



**170-00009**

(4) points tightening knob  
1/4"-20 x 1"

# TIGHTENING KNOB & WRENCH

(6) POINTS



**170-00004**

(6) points tightening knob  
1/4"-20 x 1/2"



**170-00001**

(6) points tightening knob  
1/4"-20 x 5/8"



**170-00002**

(6) points tightening knob  
1/4"-20 x 3/4"



**170-00003**

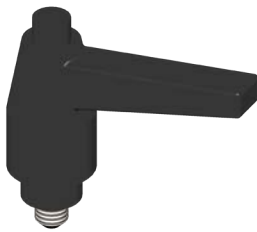
(6) points tightening knob  
1/4"-20 x 1/2"



**170-00010**

(6) points tightening knob  
1/4"-20 x 1-1/2"

LEVER



**170-00011**

Retractable lever handle  
1/4"-20UNC



**C00520P**

39.8mm Wheel tightening  
wrench

TIGHTENING WRENCH

## SIZES AND COMPONENT IDENTIFICATION



A1-A2-A3

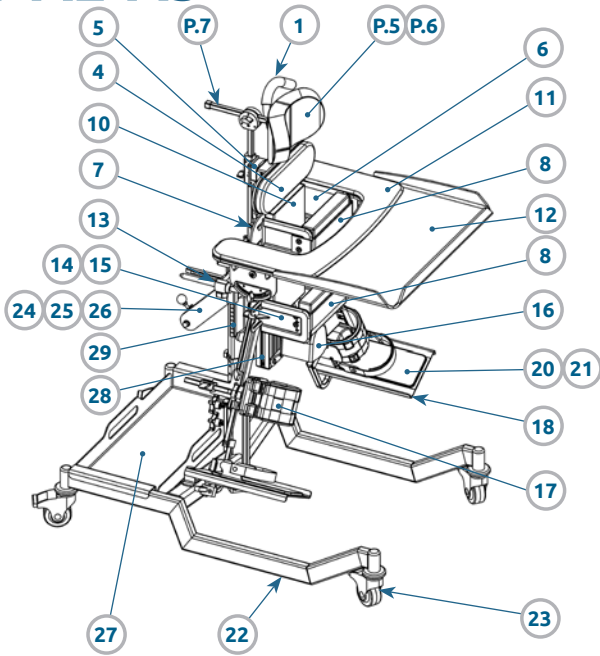


S1-S2-S3

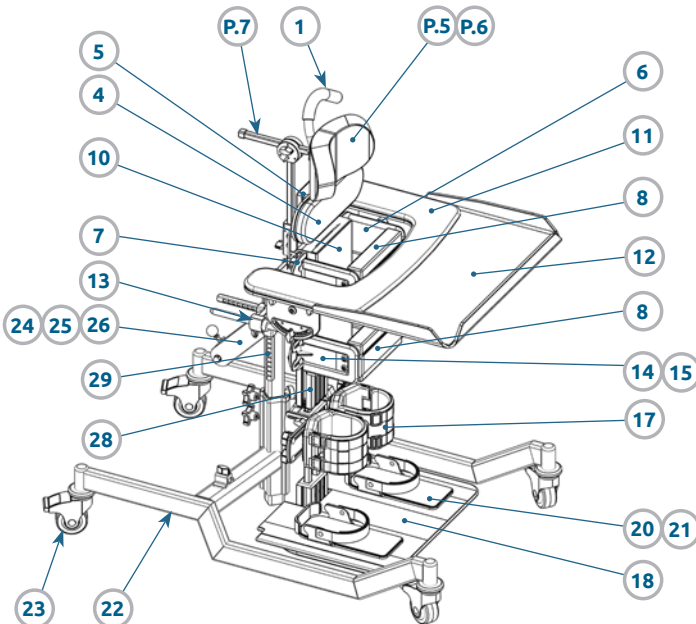


S4-S5-S6

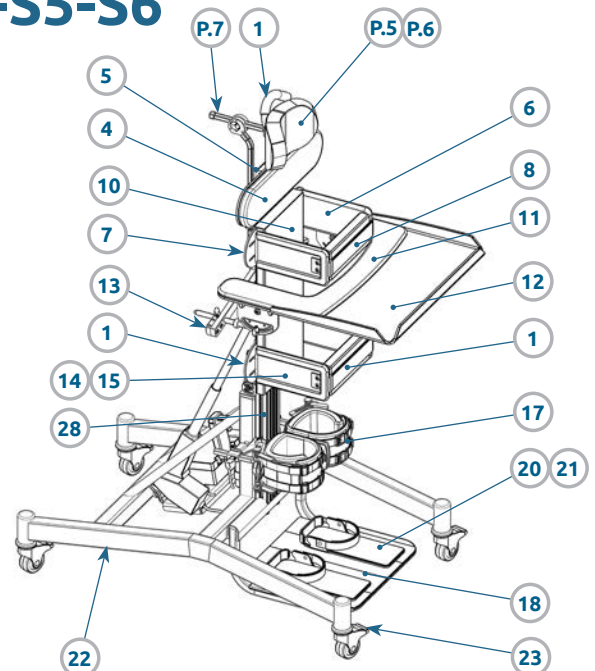
### A1-A2-A3



### S1-S2-S3



### S4-S5-S6

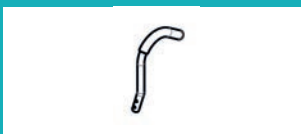


VERTIFLEX SIZES			
	Size 1	Size 2	Size 3
Maximum weight	50 lbs	70 lbs	150 lbs
Floor to axilla	17" to 30"	23" to 38"	31" to 53"
	Size 4	Size 5	Size 6
Maximum weight	250 lbs	250 lbs	250 lbs
Floor to axilla	42" to 52"	47" to 57"	54" to 64"

1

## PUSH HANDLE

(Supine & Hybrid models)



Part number	Size	A1-2-3	S1-2-3	S4-5-6
019-00002	Universal	√	√	

2

## PADDED CHINREST



Part number	Size	A1-2-3	S1-2-3	S4-5-6
019-00052	Universal	√	√	√

3

## PRONE HEADREST



Part number	Vertiflex size	A1-2-3	S1-2-3	S4-5-6
019-00050-B	1	√	√	
019-00050-K	2	√	√	
019-00050-J	3	√	√	

4

## SHOULDER SUPPORT

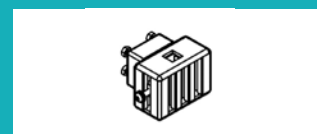
(Supine & Hybrid models)



Part number	Dimensions	A1-2-3	S1-2-3	S4-5-6
019-00006-38	3" X 8" LG	√	√	
019-00006-310	3" X 10" LG	√	√	
019-00006-412	4" X 12" LG	√	√	√
019-00006-516	5" X 16" LG	√	√	√
019-00006-520	5" X 20" LG	√	√	√
019-00006-524	5" X 24" LG			√

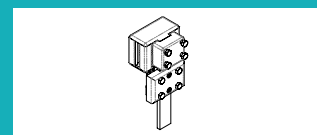
5

## AXILLA ANCHOR BLOCK



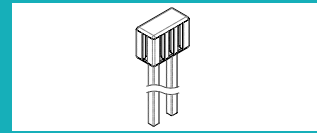
Part number	Vertiflex size	A1-2-3	S1-2-3	S4-5-6
019-00012-004	1	√	√	
019-00012-005	2, 3	√	√	

## HYBRID HEADREST ANCHOR BLOCK



Part number	Vertiflex size	A1-2-3	S1-2-3	S4-5-6
019-00001-7	1, 2	√	√	
019-00001-10	3	√	√	

## SHOULDER ANCHOR BLOCK

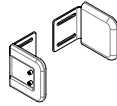


Part number	Vertiflex size	A1-2-3	S1-2-3	S4-5-6
019-00012-001	1	√	√	
019-00012-002	2	√	√	
019-00012-003	3	√	√	



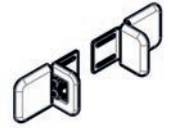
6

## STANDARD THORACIC SUPPORT



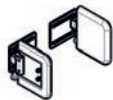
Part number	Dimensions	A1-2-3	S1-2-3	S4-5-6
019-00034-BK03	4" X 3" LG	√	√	
019-00034-BK04	4" X 4" LG	√	√	
019-00034-BK05	4" X 5" LG	√	√	
019-00034-BK06	4" X 6" LG	√	√	
019-00034-BK07	4" X 7" LG	√	√	
019-00034-J05	5" X 5" LG	√	√	√
019-00034-J06	5" X 6" LG	√	√	√
019-00034-J07	5" X 7" LG	√	√	√
019-00034-J08	5" X 8" LG	√	√	√
019-00034-J09	5" X 9" LG	√	√	√
019-00034-J10	5" X 10" LG	√	√	√
019-00034-J11	5" X 11" LG			√
019-00034-J12	5" X 12" LG			√
019-00034-J13	5" X 13" LG			√
019-00034-J14	5" X 14" LG			√

## THORACIC SUPPORT WITH ELBOW STOP



Part number	Dimensions	A1-2-3	S1-2-3	S4-5-6
019-00042-BK03	4" X 3" LG	√	√	
019-00042-BK04	4" X 4" LG	√	√	
019-00042-BK05	4" X 5" LG	√	√	
019-00042-BK06	4" X 6" LG	√	√	
019-00042-BK07	4" X 7" LG	√	√	
019-00042-J05	5" X 5" LG	√	√	√
019-00042-J06	5" X 6" LG	√	√	√
019-00042-J07	5" X 7" LG	√	√	√
019-00042-J08	5" X 8" LG	√	√	√
019-00042-J09	5" X 9" LG	√	√	√
019-00042-J10	5" X 10" LG	√	√	√
019-00042-J11	5" X 11" LG			√
019-00042-J12	5" X 12" LG			√
019-00042-J13	5" X 13" LG			√
019-00042-J14	5" X 14" LG			√

## SWING AWAY THORACIC SUPPORT



Part number	Dimensions	A1-2-3	S1-2-3	S4-5-6
019-00041-BK04	4" X 4" LG	√	√	
019-00041-BK05	4" X 4" LG	√	√	
019-00041-BK06	4" X 5" LG	√	√	
019-00041-BK07	4" X 6" LG	√	√	
019-00041-J05	5" X 5" LG	√	√	√
019-00041-J06	5" X 6" LG	√	√	√
019-00041-J07	5" X 7" LG	√	√	√
019-00041-J08	5" X 8" LG	√	√	√
019-00041-J09	5" X 9" LG	√	√	√
019-00041-J10	5" X 10" LG	√	√	√
019-00041-J11	5" X 11" LG			√
019-00041-J12	5" X 12" LG			√
019-00041-J13	5" X 13" LG			√
019-00041-J14	5" X 14" LG			√

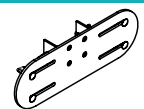
7

## INDEPENDENT THORACIC SUPPORT RECEIVER



Part number	Vertiflex size	A1-2-3	S1-2-3	S4-5-6
019-00066-B	1	√	√	
019-00066-K	2	√	√	
019-00066-J	3	√	√	
019-00066-E	4, 5, 6			√

## STANDARD THORACIC SUPPORT RECEIVER



Part number	Vertiflex size	A1-2-3	S1-2-3	S4-5-6
019-00007-B	1	√	√	
019-00007-K	2	√	√	
019-00007-J	3	√	√	
019-00007-E	4, 5, 6			√

8

## PADDED STRAP



### SOFT THORACIC

Part number	Dimensions	A1-2-3	S1-2-3	S4-5-6
019-00028-35	3" X 5" LG	√	√	
019-00028-36	3" X 5" LG	√	√	
019-00028-37	3" X 7" LG	√	√	
019-00028-48	4" X 8" LG	√	√	√
019-00028-410	4" X 10" LG	√	√	√
019-00028-413	4" X 13" LG	√	√	√
019-00028-416	4" X 16" LG	√	√	√

### SOFT HIP

Part number	Dimensions	A1-2-3	S1-2-3	S4-5-6
019-00029-35	3" X 5" LG	√	√	
019-00029-36	3" X 5" LG	√	√	
019-00029-37	3" X 7" LG	√	√	
019-00029-48	4" X 8" LG	√	√	√
019-00029-410	4" X 10" LG	√	√	√
019-00029-413	4" X 13" LG	√	√	√
019-00029-416	4" X 16" LG	√	√	√

### RIGID HIP (prone & hybrid models)

Part number	Dimensions	A1-2-3	S1-2-3	S4-5-6
019-00035-35	3" X 5" LG	√	√	
019-00035-36	3" X 5" LG	√	√	
019-00035-37	3" X 7" LG	√	√	
019-00035-48	4" X 8" LG	√	√	√
019-00035-410	4" X 10" LG	√	√	√
019-00035-413	4" X 13" LG	√	√	√
019-00035-416	4" X 16" LG	√	√	√

10

## PLANAR PAD



Part number	Dimensions	A1-2-3	S1-2-3	S4-5-6
019-00038-56	5" X 6" LG	√	√	
019-00038-510	5" X 10" LG	√	√	
019-00038-68	6" X 8" LG	√	√	
019-00038-612	6" X 12" LG	√	√	
019-00038-710	7" X 10" LG	√	√	
019-00038-714	7" X 14" LG	√	√	
019-00038-812	8" X 12" LG	√	√	√
019-00038-816	8" X 16" LG	√	√	√
019-00038-1016	10" X 16" LG	√	√	√
019-00038-1020	10" X 20" LG	√	√	√
019-00038-1318	13" X 18" LG	√	√	√
019-00038-1322	13" X 22" LG	√	√	√
019-00038-1624	16" X 24" LG	√	√	√
019-00038-1626	16" X 26" LG	√	√	√

11

## HALF TRAY PADDING



Part number	Dimensions	A1-2-3	S1-2-3	S4-5-6
019-00046-20	20" X 11"	√	√	
019-00046-22	22" X 13"	√	√	
019-00046-24	24" X 15"	√	√	√
019-00046-26	26"			√
019-00046-28	28"			√

9

## CHEST HARNESS

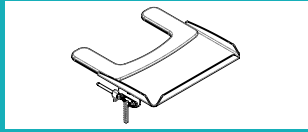


Part number	Size	A1-2-3	S1-2-3	S4-5-6
019-00044-XS	X-Small	√	√	
019-00044-S	Small	√	√	
019-00044-M	Medium	√	√	√
019-00044-L	Large	√	√	√

12

## STANDARD TRAY

(with half tray padding)



Part number	Dimensions	A1-2-3	S1-2-3	S4-5-6
019-00011-20 CLEAR LEXAN	20" X 20"	√	√	
019-00011-22 CLEAR LEXAN	22" X 22"	√	√	
019-00011-24 CLEAR LEXAN	24" X 24"	√	√	
019-00011-24 CLEAR LEXAN	24" X 24"			√
019-00011-26 CLEAR LEXAN	26" X 26"			√
019-00011-28 CLEAR LEXAN	28" X 28"			√
019-00010-20 BLACK ABS	20" X 20"	√	√	
019-00010-22 BLACK ABS	22" X 22"	√	√	
019-00010-24 BLACK ABS	24" X 24"	√	√	
019-00010-24 BLACK ABS	24" X 24"			√
019-00010-26 BLACK ABS	26" X 26"			√
019-00010-28 BLACK ABS	28" X 28"			√

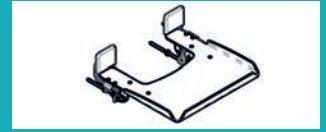
## TRAY WITH ACTIVITY BOWL

(with half tray padding)



Part number	Dimensions	A1-2-3	S1-2-3	S4-5-6
019-00049-20 CLEAR LEXAN	20" X 20"	√	√	
019-00049-22 CLEAR LEXAN	22" X 22"	√	√	
019-00049-24 CLEAR LEXAN	24" X 24"	√	√	
019-00057-20 BLACK ABS	20" X 20"	√	√	
019-00057-22 BLACK ABS	22" X 22"	√	√	
019-00057-24 BLACK ABS	24" X 24"	√	√	

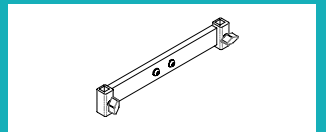
## SET OF (2) ELBOW STOP FOR TRAY



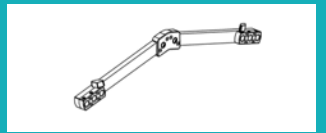
Part number	Dimensions	A1-2-3	S1-2-3	S4-5-6
019-00065	4-3/8" H X 5" L	√	√	√

13

## UNIVERSAL TRAY SUPPORT



Part number	Tray size	A1-2-3	S1-2-3	S4-5-6
019-00005-10	20"	√	√	
019-00005-12	22"	√	√	
019-00005-14	24"	√	√	

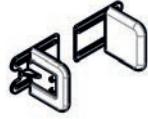


Part number	Tray size	A1-2-3	S1-2-3	S4-5-6
C00102A	24", 26", 28"			√



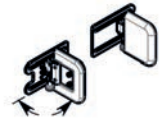
14

## STANDARD HIP SUPPORT



Part number	Dimensions	A1-2-3	S1-2-3	S4-5-6
019-00043-BK3	4" X 3" LG		✓	
019-00043-BK4	4" X 4" LG		✓	
019-00043-BK5	4" X 5" LG		✓	
019-00043-BK6	4" X 6" LG		✓	
019-00043-BK7	4" X 7" LG		✓	✓
019-00043-J05	5" X 5" LG		✓	✓
019-00043-J06	5" X 6" LG		✓	✓
019-00043-J07	5" X 7" LG		✓	✓
019-00043-J08	5" X 8" LG		✓	✓
019-00043-J09	5" X 9" LG		✓	✓
019-00043-J10	5" X 10" LG		✓	✓
019-00043-J11	5" X 11" LG			✓
019-00043-J12	5" X 12" LG			✓
019-00043-J13	5" X 13" LG			✓
019-00043-J14	5" X 14" LG			✓
019-00053-BK3	4" X 3" LG	✓		
019-00053-BK4	4" X 4" LG	✓		
019-00053-BK5	4" X 5" LG	✓		
019-00053-BK6	4" X 6" LG	✓		
019-00053-BK7	4" X 7" LG	✓		
019-00053-J05	5" X 5" LG	✓		
019-00053-J06	5" X 6" LG	✓		
019-00053-J07	5" X 7" LG	✓		
019-00053-J08	5" X 8" LG	✓		
019-00053-J09	5" X 9" LG	✓		
019-00053-J10	5" X 10" LG	✓		
019-00053-J11	5" X 11" LG	✓		
019-00053-J12	5" X 12" LG	✓		
019-00053-J13	5" X 13" LG	✓		
019-00053-J14	5" X 14" LG	✓		

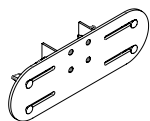
## SWING AWAY HIP SUPPORT



Part number	Dimensions	A1-2-3	S1-2-3	S4-5-6
019-00036-BK04	4" X 4" LG	✓		
019-00036-BK05	4" X 5" LG	✓		
019-00036-BK06	4" X 6" LG	✓		
019-00036-BK07	4" X 7" LG	✓		
019-00036-J05	5" X 5" LG	✓		
019-00036-J06	5" X 6" LG	✓		
019-00036-J07	5" X 7" LG	✓		
019-00036-J08	5" X 8" LG	✓		
019-00036-J09	5" X 9" LG	✓		
019-00036-J10	5" X 10" LG	✓		
019-00045-BK04	4" X 4" LG		✓	
019-00045-BK05	4" X 5" LG		✓	
019-00045-BK06	4" X 6" LG		✓	
019-00045-BK07	4" X 7" LG		✓	
019-00045-J05	5" X 5" LG		✓	✓
019-00045-J06	5" X 6" LG		✓	✓
019-00045-J07	5" X 7" LG		✓	✓
019-00045-J08	5" X 8" LG		✓	✓
019-00045-J09	5" X 9" LG		✓	✓
019-00045-J10	5" X 10" LG		✓	✓
019-00045-J11	5" X 11" LG			✓
019-00045-J12	5" X 12" LG			✓
019-00045-J13	5" X 13" LG			✓
019-00045-J14	5" X 14" LG			✓

15

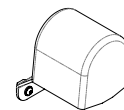
## HIP SUPPORT RECEIVER



Part number	Vertiflex size	A1-2-3	S1-2-3	S4-5-6
019-00020-B	1	√	√	
019-00020-K	2	√	√	
019-00020-J	3	√	√	
019-00020-E	4, 5, 6			√

16

## ABDUCTION POMMEL



Part number	Dimensions	A1-2-3	S1-2-3	S4-5-6
019-00008-SS	3" x 3.31" H	√	√	√
019-00008-SM	3.81" x 3.81" H	√	√	√
019-00008-SL	5.25" x 4.38" H	√	√	√

17

## SIMPLE LATERAL KNEE SUPPORT



### STANDARD

Part number	Vertiflex size	A1-2-3	S1-2-3	S4-5-6
019-00032-B	1	√		
019-00032-K	2	√		
019-00032-J	3	√		
019-00033-B	1		√	
019-00033-K	2		√	
019-00033-J	3		√	√

## DOUBLE LATERAL KNEE SUPPORT



### STANDARD

Part number	Vertiflex size	A1-2-3	S1-2-3	S4-5-6
019-00072-B	1	√		
019-00072-K	2	√		
019-00072-J	3	√		
019-00073-B	1		√	
019-00073-K	2		√	
019-00073-J	3		√	√



### MULTI-AXIS

Part number	Vertiflex size	A1-2-3	S1-2-3	S4-5-6
019-00030-B	1	√		
019-00030-K	2	√		
019-00030-J	3	√		
019-00031-B	1		√	
019-00031-K	2		√	
019-00031-J	3		√	



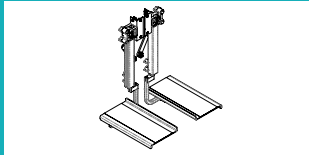
### MULTI-AXIS

Part number	Vertiflex size	A1-2-3	S1-2-3	S4-5-6
019-00070-B	1	√		
019-00070-K	2	√		
019-00070-J	3	√		
019-00071-B	1		√	
019-00071-K	2		√	
019-00071-J	3		√	

18

## SET OF (2) MULTI-AXIS FOOTRESTS

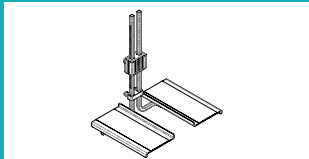
(Abduction Vertiflex)



Part number	Vertiflex size	A1-2-3	S1-2-3	S4-5-6
019-00009-B	1	√		
019-00009-B-XL	1XL	√		
019-00009-K	2	√		
019-00009-K-XL	2XL	√		
019-00009-J	3	√		
019-00009-J-XL	3XL	√		

## SET OF (2) MULTI-AXIS FOOTRESTS

(Standard Vertiflex)



Part number	Vertiflex size	A1-2-3	S1-2-3	S4-5-6
019-00022-B	1		√	
019-00022-K	2		√	
019-00022-J	3		√	

## PLATE TYPE FOOTREST

(Standard Vertiflex)



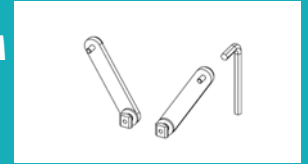
Part number	Vertiflex size	A1-2-3	S1-2-3	S4-5-6
019-00021-B	1		√	
019-00021-K	2		√	
019-00021-J	3		√	



Part number	Vertiflex size	A1-2-3	S1-2-3	S4-5-6
019-00021-S	4, 5, 6			√

19

## ABDUCTION SYSTEM CONVERSION KIT



Part number	Vertiflex size	A1-2-3	S1-2-3	S4-5-6
019-00062-B	1	√		
019-00062-K	2	√		
019-00062-J	3	√		

20

## SET OF (2) FOOT HOLDERS



Part number	Dimensions	A1-2-3	S1-2-3	S4-5-6
140-00001-1	2 1/2 X 5 1/2 Lg.	√	√	
140-00001-2	3 X 6 3/4 Lg.	√	√	
140-00001-3	3 1/2 X 7 1/2 Lg.	√	√	√
140-00001-4	3 3/4 X 8 1/2 Lg.	√	√	√
140-00001-5	4 X 9 1/2 Lg.	√	√	√
140-00001-6	4 1/4 X 10 1/2 Lg.	√	√	√
140-00001-7	4 3/4 X 12 Lg.	√	√	√
140-00001-8	5 X 13 Lg.	√	√	√

21

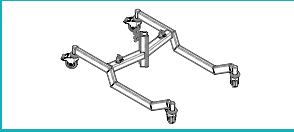
## SET OF (2) TOE STRAPS



Part number	Foot support #	A1-2-3	S1-2-3	S4-5-6
140-0001-1TS	140-00001-1	√	√	
140-0001-2TS	140-00001-2	√	√	
140-0001-3TS	140-00001-3	√	√	√
140-0001-4TS	140-00001-4	√	√	√
140-0001-5TS	140-00001-5	√	√	√
140-0001-6TS	140-00001-6	√	√	√
140-0001-7TS	140-00001-7	√	√	√
140-0001-8TS	140-00001-8	√	√	√

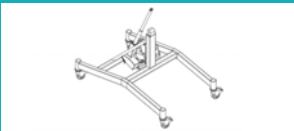
22

## UNIVERSAL BASE ON WHEELS



Part number	Vertiflex size	A1-2-3	S1-2-3	S4-5-6
019-00080-B	1	√	√	
019-00080-KJ	2, 3	√	√	

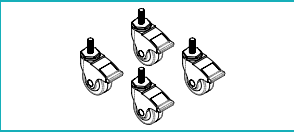
Cylinder, battery and charger included



Part number	Vertiflex size	A1-2-3	S1-2-3	S4-5-6
019-00026	4,5,6			√

23

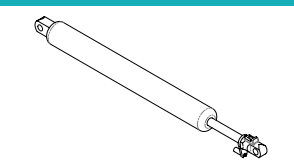
## SET OF (4) SWIVEL WHEELS WITH BRAKE



Part number	Year	A1-2-3	S1-2-3	S4-5-6
019-00068-MET	After 2021	√	√	√
019-00068-IMP	Before 2021	√	√	√

24

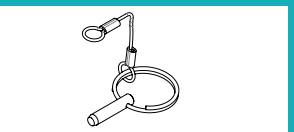
## GAS CYLINDER



Part number	Vertiflex size	A1-2-3	S1-2-3	S4-5-6
019-00111-B	1	√	√	
019-00111-K	2	√	√	
019-00111-J	3	√	√	

25

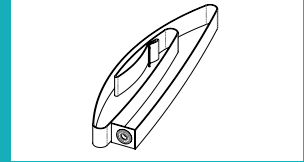
## CYLINDER HAND-LEVER LOCK



Part number	Size	A1-2-3	S1-2-3	S4-5-6
019-00051	Universal	√	√	

26

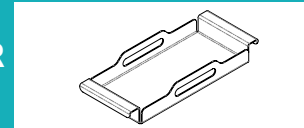
## CYLINDER ACTIVATION STRAP



Part number	Vertiflex size	A1-2-3	S1-2-3	S4-5-6
019-00104-B	1	√	√	
019-00104-K	2	√	√	
019-00104-J	3	√	√	

27

## ACCESSORY TRAY FOR UNIVERSAL BASE



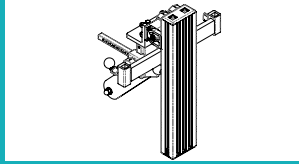
Part number	Vertiflex size	A1-2-3	S1-2-3	S4-5-6
019-00103-B	1	√	√	
019-00103-KJ	2, 3	√	√	



28

## VERTIFLEX FRAME KIT

(Cylinder included)



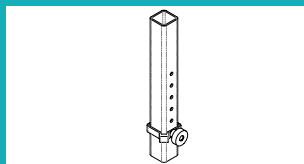
Part number	Vertiflex size	A1-2-3	S1-2-3	S4-5-6
019-00092-B	1	√	√	
019-00092-K	2	√	√	
019-00092-J	3	√	√	



Part number	Vertiflex size	A1-2-3	S1-2-3	S4-5-6
019-00025-SS4	4 / supine			√
019-00025-SS5	5 / supine			√
019-00025-SS6	6 / supine			√
019-00025-SP4	4 / prone			√
019-00025-SP5	5 / prone			√
019-00024-SP6	6 / prone			√

29

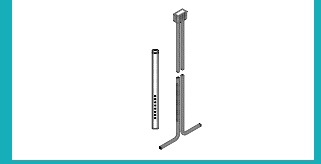
## VERTIFLEX CENTRAL MAST KIT



Part number	Vertiflex size	A1-2-3	S1-2-3	S4-5-6
019-00086-B	1	√	√	
019-00086-K	2	√	√	
019-00086-K-XL	2XL	√	√	
019-00086-J	3	√	√	
019-00086-J-XL	3XL	√	√	

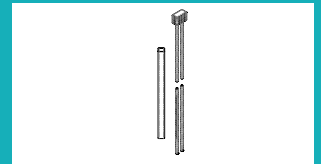
30

## MULTI-AXIS STANDARD GROWING KIT



Part number	Vertiflex size	A1-2-3	S1-2-3	S4-5-6
019-00093-K	2		√	
019-00093-J	3		√	

## STANDARD GROWING KIT



Part number	Vertiflex size	A1-2-3	S1-2-3	S4-5-6
019-00095-K	2		√	
019-00095-J	3		√	

## ABDUCTION GROWING KIT

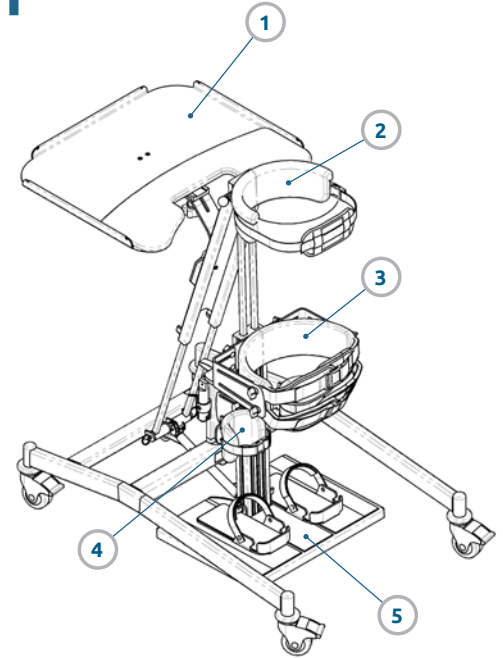


Part number	Vertiflex size	A1-2-3	S1-2-3	S4-5-6
019-00094-B	1	√		
019-00094-K	2	√		
019-00094-J	3	√		

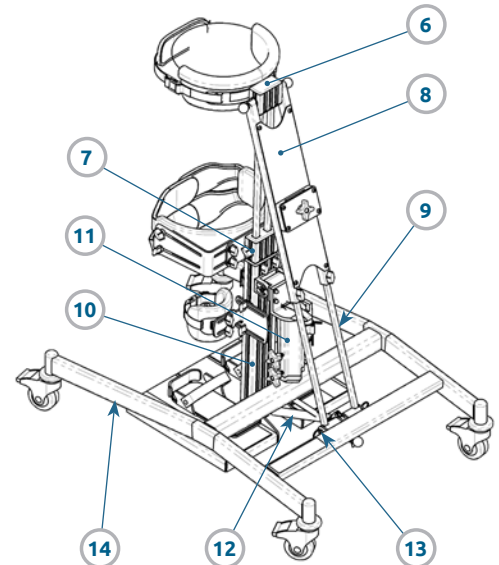
# SIZES AND COMPONENT IDENTIFICATION



## SKY



Shown with tray



Shown without tray

SKY SIZES	023-00001-1 Size 1	023-00001-2 Size 2	023-00001-3 Size 3
Maximum weight	100 lbs	160 lbs	160 lbs
Floor to axilla	20" to 32"	27" to 41"	34" to 48"
Floor to mid hip	15" to 25"	20" to 31"	25" to 37"
Floor to knee	4" to 12"	4" to 16"	4" to 20"

1

### TRAY WITH HALF PADDING



Part number	Dimensions	Size 1	Size 2	Size 3
023-00009-1	20" L x 16"	√		
023-00009-2	24" L x 20"		√	√

2

### THORACIC SUPPORT



Part number	Thoracic width	Size 1	Size 2	Size 3
023-00011-1	5" to 9"	√		
023-00011-2	7" to 11"		√	
023-00011-3	9" to 13"			√

3

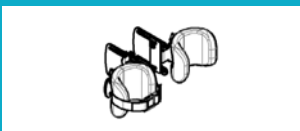
### HIP SUPPORT



Part number	Hip width	Size 1	Size 2	Size 3
023-00012-1	5" to 9"	√		
023-00012-2	7" to 11"		√	
023-00012-3	9" to 13"			√

4

### KNEE SUPPORT



Part number	Knee width	Size 1	Size 2	Size 3
023-00013-1	1.5" to 3.5"	√		
023-00013-2	2.5" to 4"		√	
023-00013-3	3" to 5.5"			√

5

### FOOTPLATE (foot supports included)



Part number	Dimensions	Size 1	Size 2	Size 3
023-00007-1	12" D x 14" L	√		
023-00007-2	14" D x 18" L		√	
023-00007-3	14" D x 18" L			√

6

### THORACIC ANCHOR BLOCK



Part number	Length	Size 1	Size 2	Size 3
023-00005-1	20-3/8"	√		
023-00005-2	26-3/8"		√	
023-00005-3	30-3/8"			√

7

### HIP ANCHOR BLOCK



Part number	Type	Size 1	Size 2	Size 3
023-00006-1	2 bars	√	√	
023-00006-2	3 bars			√

8

### STABILIZER



Part number	Length	Size 1	Size 2	Size 3
023-00008-1	15-1/2"	√		
023-00008-2	22"		√	
023-00008-3	28"			√

9

### STABILIZER EXTENSION



Part number	Length	Size 1	Size 2	Size 3
023-00010-1	15-11/16"	√		
023-00010-2	19-11/16"		√	
023-00010-3	25-11/16"			√

10

### CENTRAL FRAME



Part number	Length	Size 1	Size 2	Size 3
023-00004-1	14-15/16"	√		
023-00004-2	19-1/2"		√	
023-00004-3	24-1/2"			√

11

### ASSEMBLED HINGE SUPPORT



Part number	Length	Size 1	Size 2	Size 3
023-00003-1	6"	√		
023-00003-2	10"		√	
023-00003-3	15"			√

12

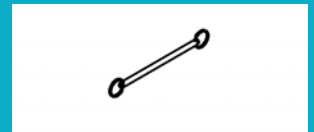
### GAS CYLINDER



Part number	Strength	Size 1	Size 2	Size 3
023-00015	90N	√		
023-00016	180N		√	
023-00017	180N			√

13

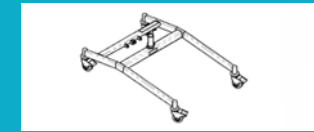
### CYLINDER FIXING PIN



Part number	Dimensions	Size 1	Size 2	Size 3
023-00014	5/16"Ø x 6"	√	√	√

14

### ASSEMBLED BASE ON WHEELS



Part number	Dimensions	Size 1	Size 2	Size 3
023-00002-1	22-1/2"x32-1/2"	√		
023-00002-2	26-1/2"x38-1/2"		√	√



Professional seating

# OMNISTOOL

508-00052

- 16" round seat
- Seat height adjustment 17.5" to 22.5"
- Swivel cylinder with cylinder protector
- 27" nylon fiberglass reinforced base
- Seat height adjustment



Practical mobility



Durability



High quality material



Lightweight



Intelligent space saving



Ergonomic Design



Easy to clean



280 lbs load capacity

Available color



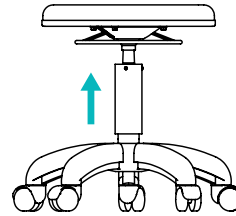
Work surface height

35" to 40"

Work position



SEATED



# OMNISTOOL+

508-00053

- Profiled seat 17"W x 16"D x 3"H with non-slip strip
- Seat height adjustment 17.5" to 22.5"
- Swivel cylinder with cylinder protector
- 27" nylon fiberglass reinforced base
- Seat height adjustment
- Seat angle adjustment
- Backrest angle adjustment
- Backrest height adjustment



Practical mobility



Durability



High quality material



Intelligent space saving



Ergonomic Design



Easy to clean



280 lbs load capacity

Available color



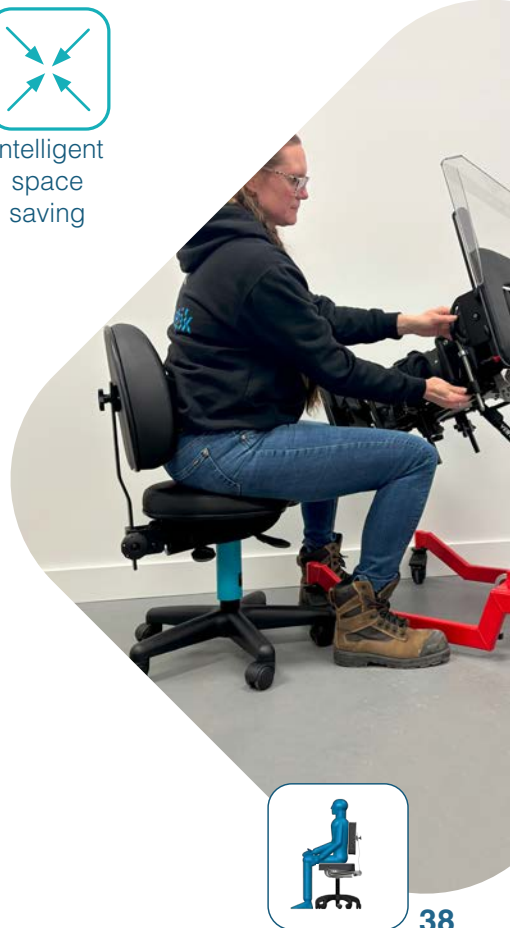
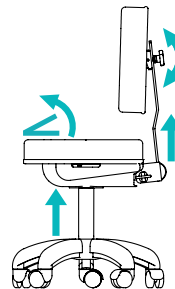
Work surface height

35" to 40"

Work position



SEATED



Professional seating

# TA200

508-00054

- Profiled seat 13"W x 12.5"D x 3"H with non-slip strip
- Seat height adjustment 26.5" to 36.5"
- Non-swivel cylinder with cylinder protector
- Industrial steel base of 16.5"W x 21.5"D with non-slip sole
- Seat height adjustment
- Seat angle adjustment



Durability



High quality material



Recovery period



Intelligent space saving



Ergonomic Design



Easy to clean



280 lbs load capacity

Available color



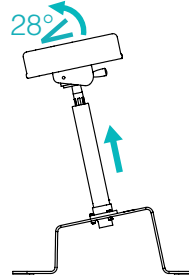
Work surface height

35" to 40"

Work position



SIT-STAND



Synetik ErgoCare



# STAG4

508-00055

- Profiled seat 12.5"L x 12"P x 3"H with non-slip strip
- Seat height adjustment 21" to 26.5"
- Knees pads with self locking brake
- Swivel cylinder with cylinder protector
- Industrial steel base of 20.25"W x 27.5"D
- Tool compartment
- Seat height adjustment
- Seat angle adjustment



Mobile & safe



Durability



High quality material

3 in 1

3 in 1 for multi-position work



Ergonomic Design



Easy to clean



280 lbs load capacity

Available color



Work surface height

0" to 40"

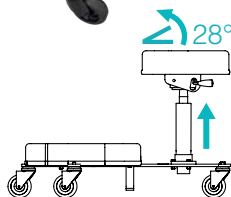
Work position



SEATED




KNEELING






# Synetik

ErgoCare

 1242, rue de Lanaudière  
Joliette (Quebec) Canada  
J6E 3P1

 450.759.9449  
1.866.739.2400

 [client@synetikgroup.com](mailto:client@synetikgroup.com)

 [www.synetikergocare.com](http://www.synetikergocare.com)

